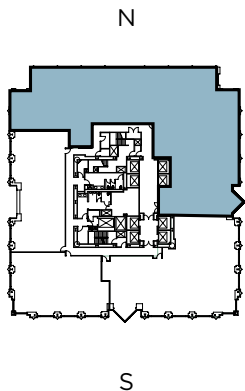
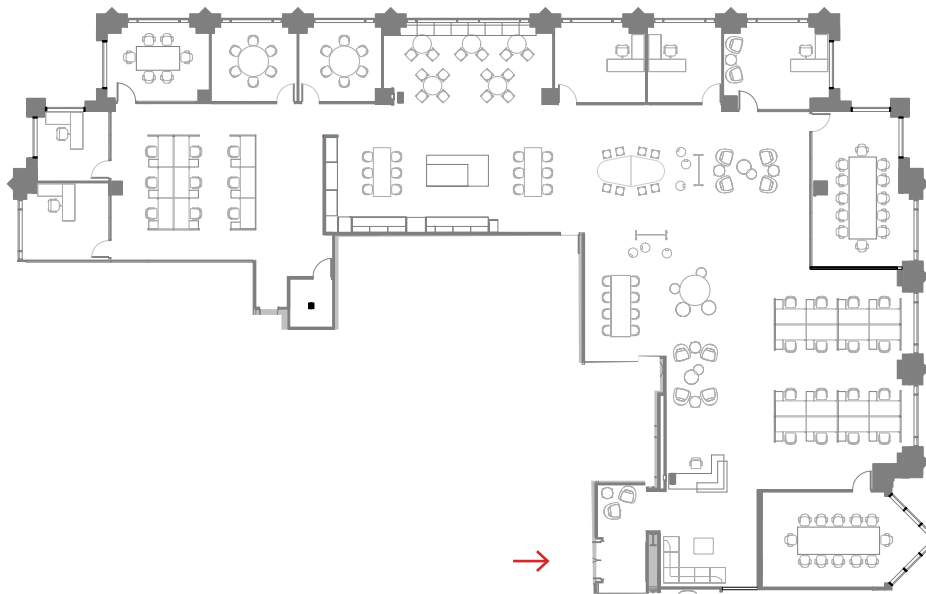


Suite 300

~10,504 RSF



*Hypothetical Furniture Plan



DOUBLE DOOR IDENTITY WITH CITY OUTLOOKS

- Suite 300: ~10,504 RSF
- **Available now**
- Recently upgraded creative suite
- Partial exposed ceiling and polished concrete floors
- 2 conference rooms and 8 huddle rooms/offices
- Open space for 30+ workstations
- Kitchen and large all-hands space